



**Award winning traditional  
hand made blue cheese**



Located in the village of Barkham, near Wokingham, Two Hoots Cheese is a small family business where we pride ourselves on producing award winning quality hand made cheese. The cheeses are made in the traditional way with pasteurised cow's and ewe's milk. They have a distinctive creamy flavour and are made without the use of artificial ingredients. All of our products are totally natural and suitable for vegetarian and gluten free diets.

### **Barkham Blue**

Gold - British Cheese Awards 2003  
 Gold - World Cheese Awards 2003  
 Best New Cheese - World Cheese Awards 2003  
 Gold - British Cheese Awards 2004  
 Bronze - British Cheese Awards 2006  
 Dairy and Ice Cream Category Winner  
 - Waitrose Small Producers Awards 2006  
 2 Golds - British Cheese Awards 2007  
 Gold - British Cheese Awards 2008  
 Best Blue Cheese - British Cheese Awards 2008  
 Best English Cheese - British Cheese Awards 2008  
 Supreme Champion - British Cheese Awards 2008  
 Gold - World Cheese Awards 2008



Barkham Blue has a very distinctive appearance. Made in a 1.2kg ammonite shaped round, it is covered in an attractive natural mould ripened rustic rind. The deep yellow moist interior is spread with dark blue - green veins. It has a rich blue taste, smooth buttery texture with a melt in the mouth flavour, without the harshness associated with some blue cheese.

### **Barkham Chase**

Gold - World Cheese Awards 2004  
 Bronze - British Cheese Awards 2004  
 Gold - World Cheese Awards 2005  
 Silver - World Cheese Awards 2007  
 Silver - Royal Bath & West Show 2008  
 Gold - British Cheese Awards 2008  
 Gold - World Cheese Awards 2008



Barkham Chase is a soft blue veined cheese with a strong creamy taste and a smooth, moist texture. It is firm to slice, melts in your mouth, becomes spreadable with age and has a distinct blue bite. Available in 1kg bricks.

### **Loddon Blewe**

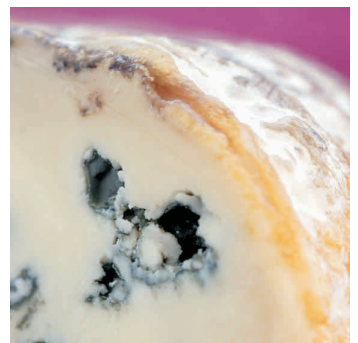
Gold - British Cheese Awards 2005  
 Gold - World Cheese Awards 2006  
 Best New Cheese - World Cheese Awards 2006



Loddon Blewe is a soft blue veined cheese made with ewe's milk. It is gentle on the palate but becomes stronger and softer with age. Mould ripened with an attractive blue grey rind. Available in 1kg rounds.



Barkham Blue - Supreme Champion, Best Blue, Best English.  
 British Cheese Awards 2008



*Two Hoots Cheese*

Feathercot School Road Barkham Wokingham RG41 4TP  
 Tel: 0118 976 0401 Fax: 0118 976 1960  
 Email: [twohoots.fc@btinternet.com](mailto:twohoots.fc@btinternet.com)  
[www.twohootscheese.co.uk](http://www.twohootscheese.co.uk)